



infoARS

INFORMATIČKA AKADEMIJA

Kurs arhitektonskog modelovanja- ArchiCAD 19

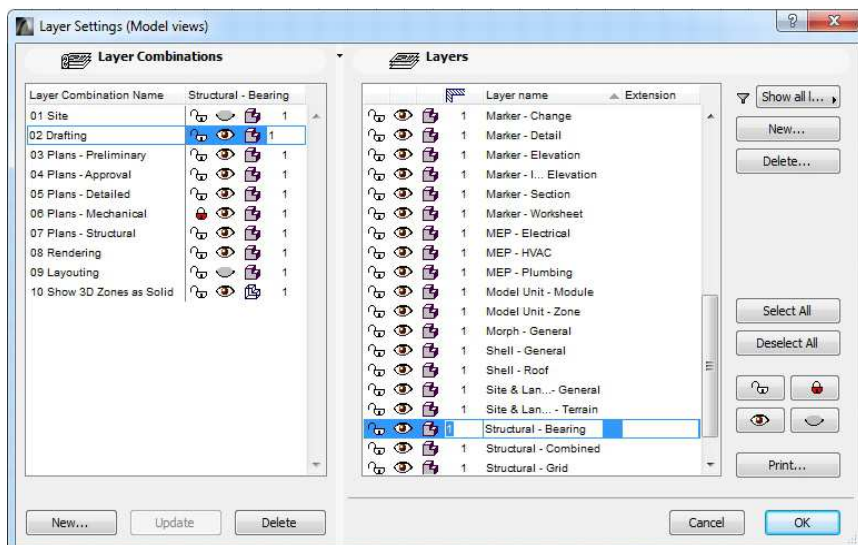
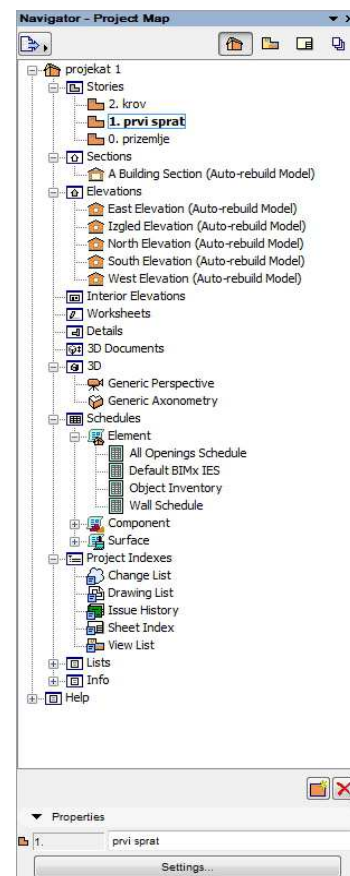
Cilj ove vježbe je da se polaznik upozna sa mogućnostima programa, radnim okruženjem- radnim prostorom, glavnim menijem, paletama, alatkama, navigacijom itd, podešavanjem parametara za rad u skladu sa potrebama, te sa radom sa osnovnim 2D alatkama- Line, Polyline, Fill.

Vježba 1- Upoznavanje sa radnim okruženjem

1

Mogućnosti programa i radno okruženje

- otvaranje i snimanje dokumenta, koncept virtuelne građevine
- struktura radnog okruženja
- glavni meni, navigator, palete, alatke, info box
- podešavanje radne pozadine, jedinica za rad



Alatke za 2d crtanje

2

- alatka Line- linija
- alatka Polyline- polilinja
- alatka Fill- srafura

Lejeri i etaže

3

- koncept lejera- sloja, podešavanja
- pravljenje novih slojeva- lejera
- virtuelne etaže
- pravljenje novih etaža
- insertovanje referentne slike za rad

051/46 46 26, 066/ 99 66 88

www.infoars.net

www.informatickaakademija.com

Kurs arhitektonskog modelovanja- ArchiCAD 19

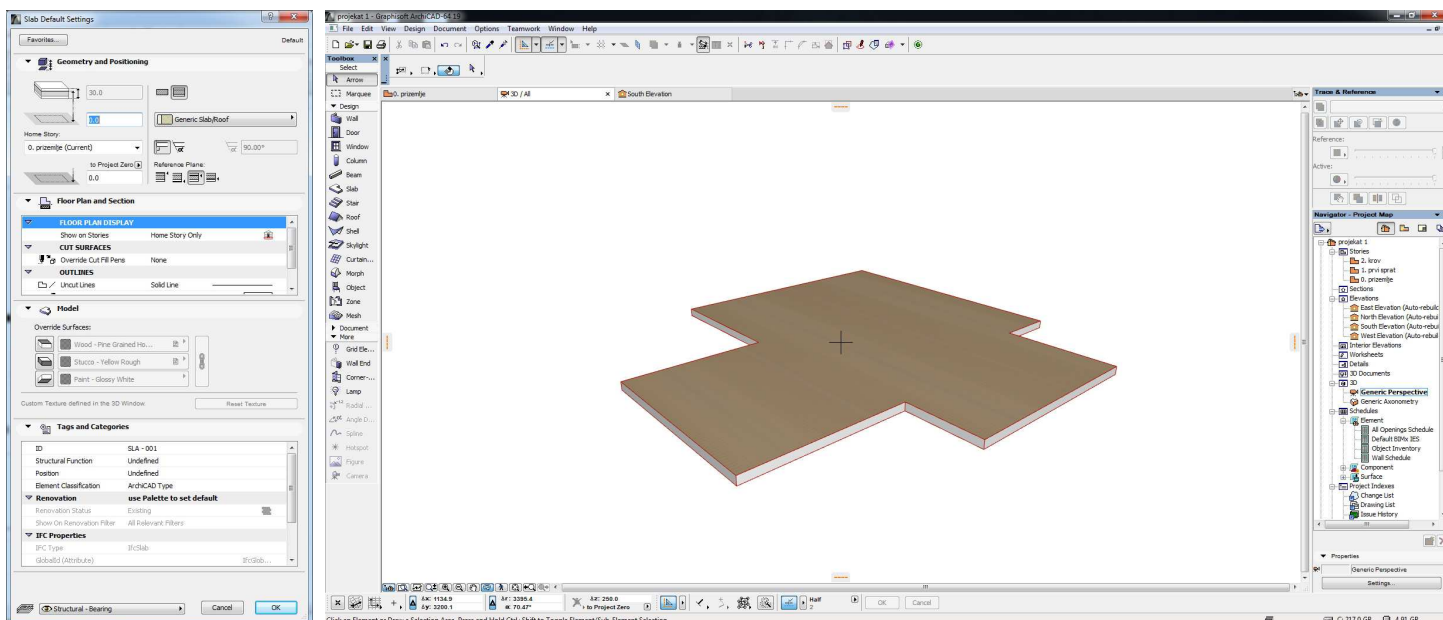
Cilj ove vježbe je da se polaznik upozna sa korištenjem osnovnih alatki za modelovanje- modelovanje horizontalnog elementa- ploče- alatka Slab i modelovanje terena- alatka Mesh i da se upozna sa kretanjem u 2d i 3d prozoru.

Vježba 2- Modelovanje ploče, terena i kretanje iz 2d u 3d prozor

1

2D prozor- Modelovanje ploče

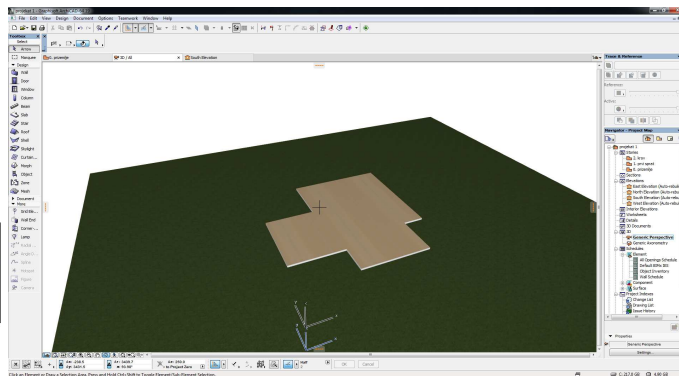
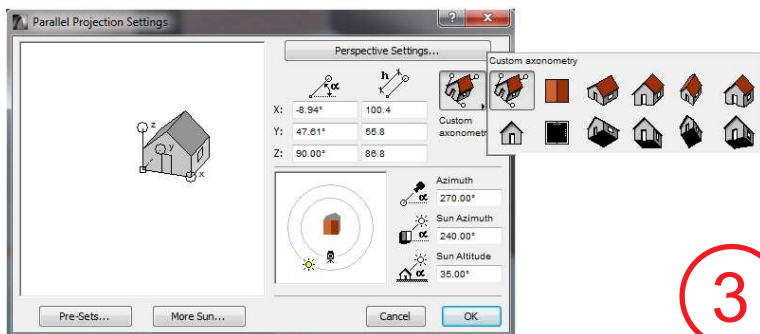
- aktiviranje komande Slab- ploča
- pregled i podešavanje parametara i iscrtavanje kontura na osnovu referentne slike
- pet paleta



3D prozor- perspektiva i aksonometrija

2

- podešavanje 3d prozora
- perspektiva i aksonometrija
- sagledavanje elemenata unutar 3d prozora
- mogućnosti editovanja elementa u 3d prozoru



3

Alatka Mesh- teren

- parametri za modelovanje terena
- iscrtavanje terena i provjera izgleda u 3d prozoru



infoARS

INFORMATIČKA AKADEMIJA

Kurs arhitektonskog modelovanja- ArchiCAD 19

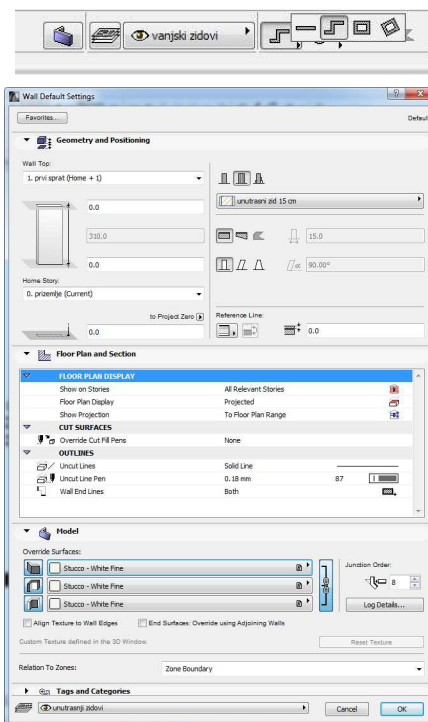
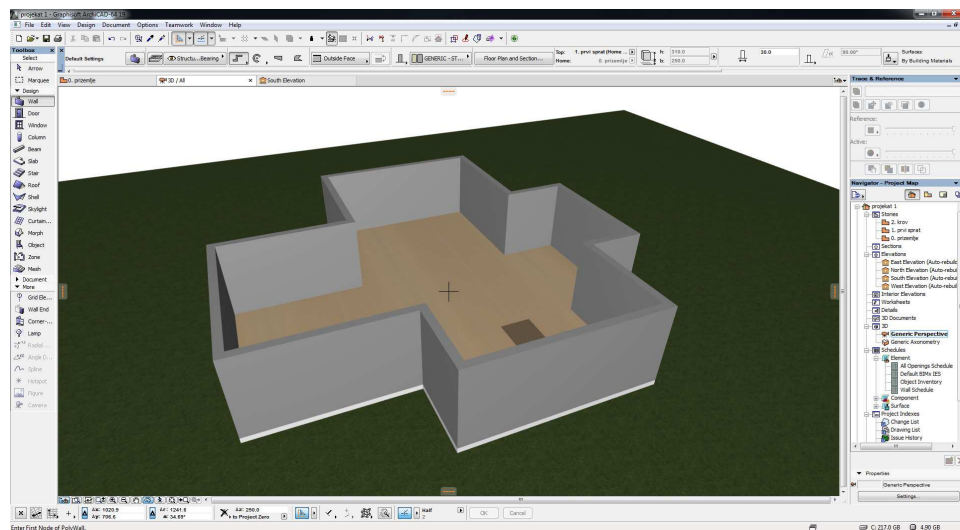
Cilj ove vježbe je da se polaznik upozna sa korištenjem alatke Wall- zid, kopiranjem elemenata na jednoj etaži i sa jedne na drugu etažu, sa komandom Trace&reference, i sa mogućnostima izmjene nacrtanih elemenata.

Vježba 3- Modelovanje zida i Trace&reference komanda

1

Modelovanje zida- alatka Wall

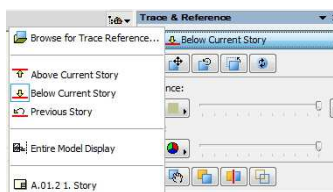
- aktiviranje komande Wall- zid
- iscrtavanje zida, referentna linija, tipovi zidova



2

Komanda Trace&reference

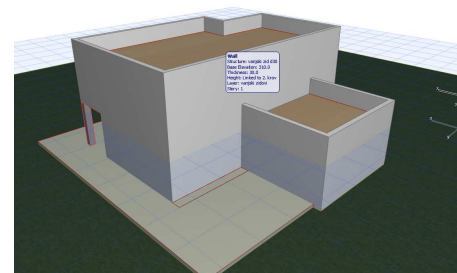
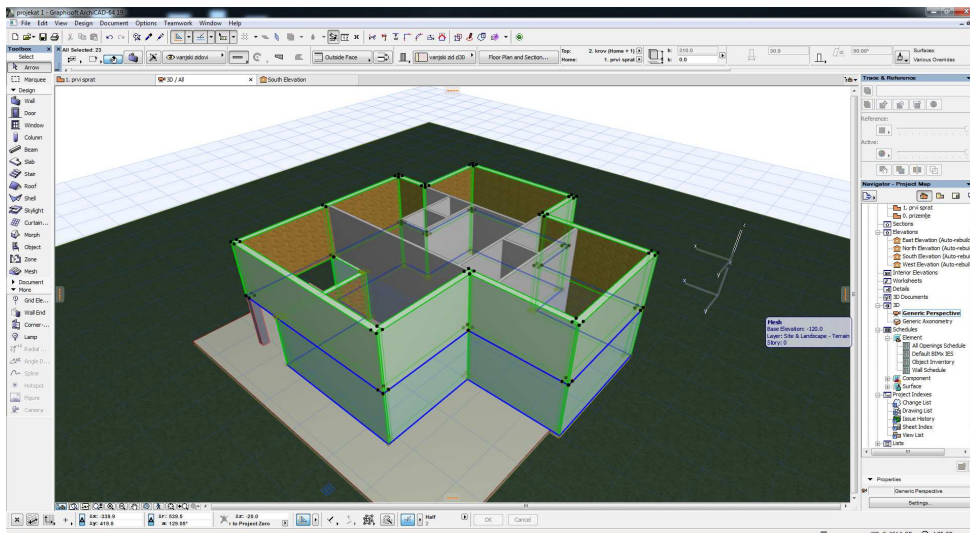
- aktiviranje komande Trace&reference
- mogućnosti i podešavanja



3

Izmjene elemenata

- kopiranje elemenata na jednoj etaži
- kopiranje elemenata sa jedne na drugu etažu
- editovanje- komanda trim





infoARS

INFORMATIČKA AKADEMIJA

Kurs arhitektonskog modelovanja- ArchiCAD 19

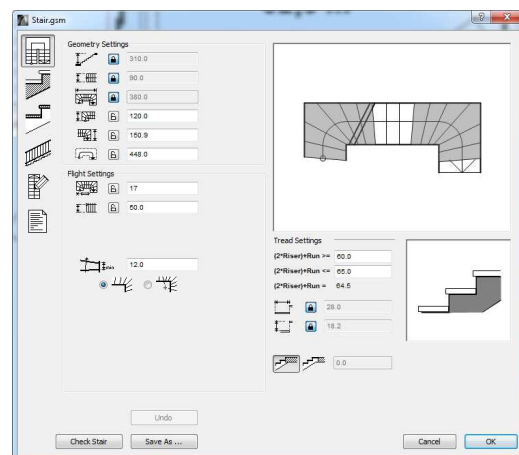
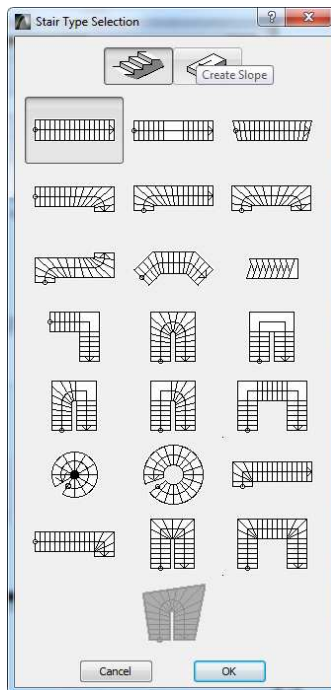
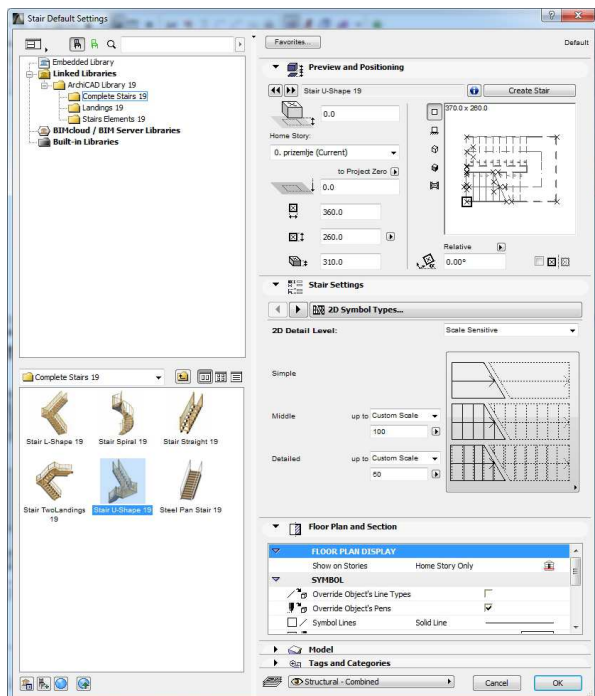
Cilj ove vježbe je da se polaznik upozna sa korištenjem alatke Stair- stepenište, sa korištenjem integrisanih modela stepeništa i sa načinom modelovanja novog stepeništa.

Vježba 4- Modelovanje stepeništa- alatka Stair

1

Integrirani modeli stepeništa

- korištenje integrisanih modela
- izmjena parametara i unošenje na crtež



2

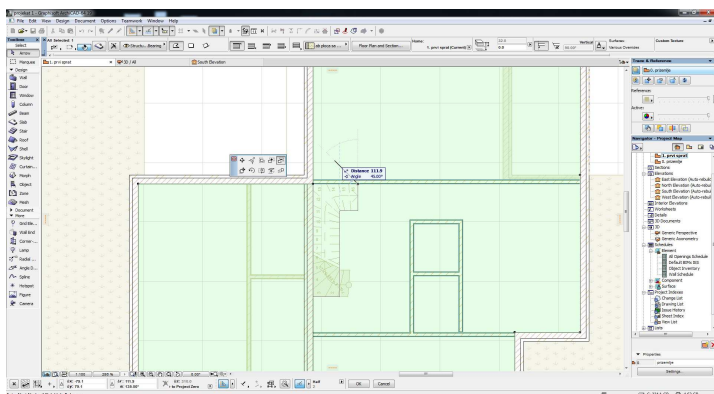
Pravljenje novog stepeništa

- način pravljenja novog stepeništa
- podešavanje parametara pojedinih elemenata stepeništa
- snimanje novog modela stepeništa

3

Stepenišni otvor

- načini isijecanja stepenišnog otvora u ploči
- provjera ispravnosti modela



Kurs arhitektonskog modelovanja- ArchiCAD 19

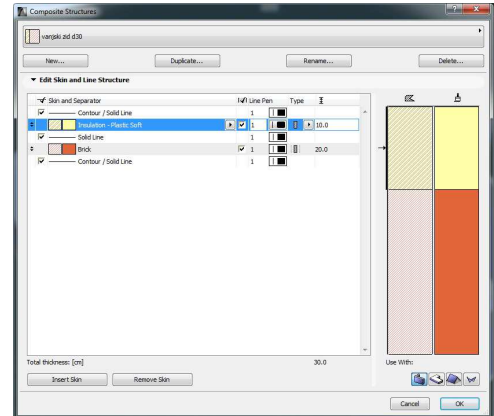
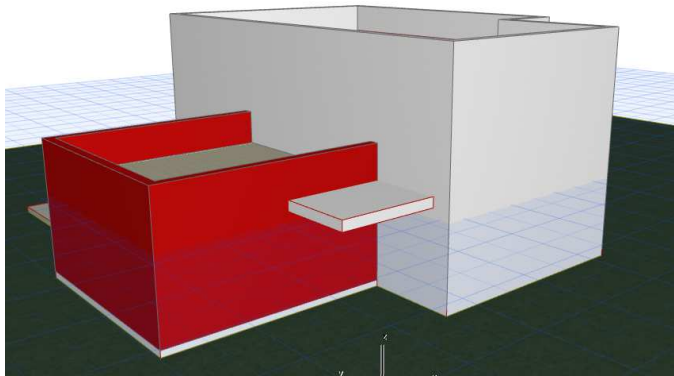
Cilj ove vježbe je da se polaznik upozna sa osobinama elemenata- materijalima- Surfaces, i kompozitima- Composites, vrstama i načinom pravljenja novih.

Vježba 5- Materijali i kompoziti

Materijali- Surfaces

- pregled integrisanih materijala
- mogućnosti kreiranja novih materijala
- izmjene materijala pojedinih elemenata

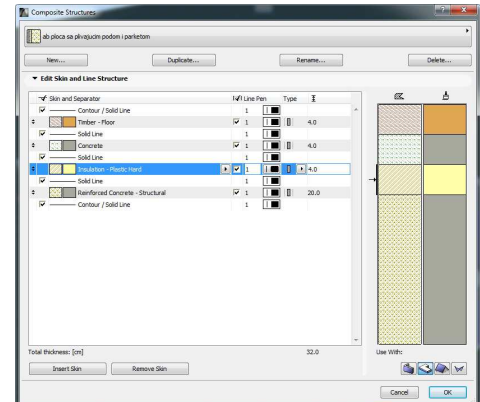
1



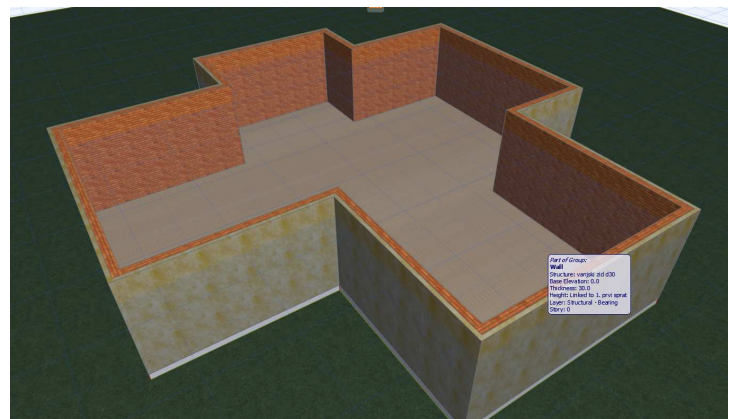
Kompoziti-Composites

- pregled integrisanih kompozita
- mogućnosti kreiranja novih kompozita
- izmjene kompozita pojedinih elemenata

2



GENERAL		
Air	Metal - Bronze	Roof Tiles - Asphalt Shingle Brown
Bark - Deciduous	Metal - Chrome 01	Roof Tiles - Asphalt Shingle Drop
Brick - Aged Natural	Metal - Copper Aged	Roof Tiles - Asphalt Shingle Gray
Brick - Brown	Metal - Copper New	Roof Tiles - Cedar Shingle Light
Brick - Common Bond	Metal - Fence Chainlink	Roof Tiles - Dutch
Brick - Flemish Bond	Metal - Gold	Roof Tiles - French Brown
Brick - Red	Metal - Iron	Roof Tiles - French Red
Brick - Red HerringBone	Metal - Nickel	Roof Tiles - Spanish
Brick - Running Bond	Metal - Perforated Small Dots	Siding - Dark
Brick - Soldier Bond	Metal - Stainless Steel	Siding - Light
Brick - Stack Bond	Metal - Steel	Siding - Medium
Brick - Surface Colour	Metal - Zinc	Stone - Granite Gray
Brick - White Natural	Paint - Alizarin Carmine	Stone - Granite Red
Carpet - 01	Paint - Anthracite	Stone - Limestone Fine
Carpet - 02	Paint - Bordeaux	Stone - Marble Black
Carpet - 03	Paint - Cadmium Orange	Stone - Marble Carrara White
Ceiling - Tile-60x120	Paint - Cadmium Yellow	Stone - Marble Pink
Ceiling - Tile-60x60	Paint - Celadon	Stone - Sandstone 01
Ceramic - Porcelain	Paint - Cobalt Blue	Stonework - 02
Concrete - 02	Paint - Dark Gray	Stonework - 12
Concrete - 04	Paint - Forest Green	Stonework - 13
Concrete - 10	Paint - Glossy White	Stucco - Beige Rough
Earth - Brown	Paint - Golden Beige	Stucco - Red Rough
Floorboards - 01	Paint - Golden Ochre	Stucco - White Fine
Floorboards - 03	Paint - Ivory Black	Stucco - White Rough
Foliage - Leaves Tree Small	Paint - Lead Oxide Yellow	Stucco - Yellow Rough
Foliage - Wild grapes	Paint - Light Gray	Textile - 01
Glass - Blue	Paint - Pale Blue	Textile - 02
Glass - Clear Fast	Paint - Pale Jade	Tiles - Light Brown 15x15
Glass - Lamp	Paint - Peach	Tiles - Mosaic Blue
Glass - Mirror	Paint - Pink Blush	Tiles - Tan 25x25
Glass - Satin	Paint - Royal Blue	Tiles - Tan 30x30
Grass - Brown	Paint - Sand Beige	Tiles - White Matte 15x15
Grass - Green	Paint - Sienna Sand	Water - Pond
Insulation - Bubble wrap	Paint - Titanium White	Water - Wavy
Insulation - Cellulose	Paint - Ultramarine Violet	Wood - Mahogany Horizontal
Insulation - Fiberglass	Paint - Vermilion	Wood - Mahogany Vertical
Insulation - Solid Brown	Paint - Yellow Ochre	Wood - Oak Light
Leather - Tabac	Parquet - 01	Wood - Pine Grained Horizontal
Lino - Blue	Parquet - 02	Wood - Pine Grained Vertical
Lino - Checkered	Pavement - Asphalt Dark	Wood - Walnut Horizontal
Lino - Gray	Pavement - Asphalt Light	Wood - Walnut Vertical
Metal - Aluminium	Pavement - Brick Moss	
Metal - Brass	Plastic - Laminate	
	Roof - Corrugated Sheet Matte	





infoARS

INFORMATIČKA AKADEMIJA

Kurs arhitektonskog modelovanja- ArchiCAD 19

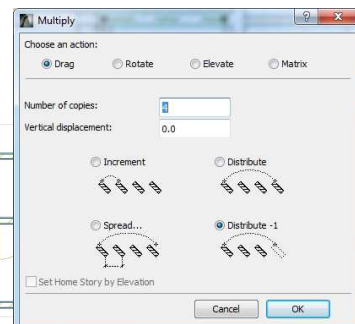
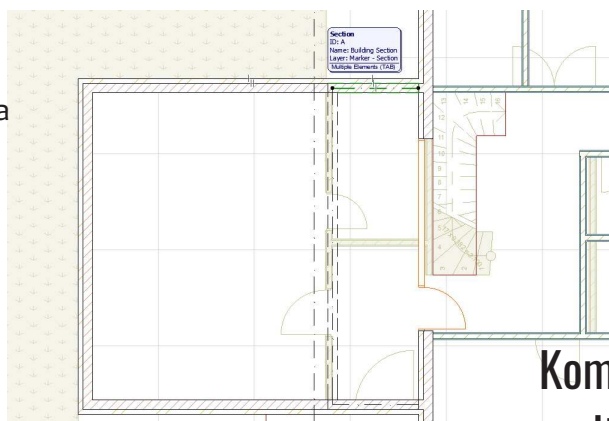
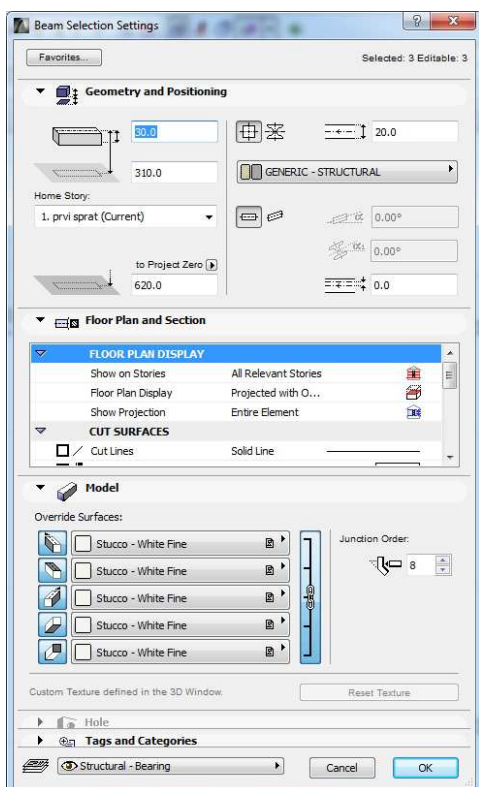
Cilj ove vježbe je da se polaznik upozna sa korištenjem alatki Beam- greda i Column- stub, njihovim parametrima i načinom crtanja u modelu.

Vježba 6- Alatke Beam- greda i Column- stub

Beam- Greda

1

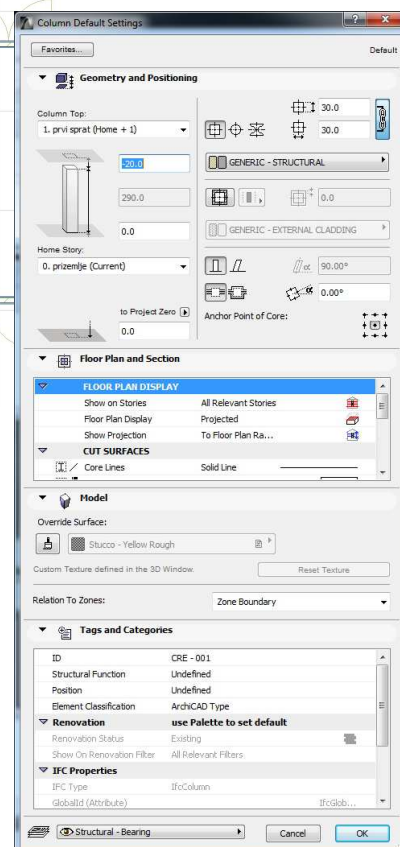
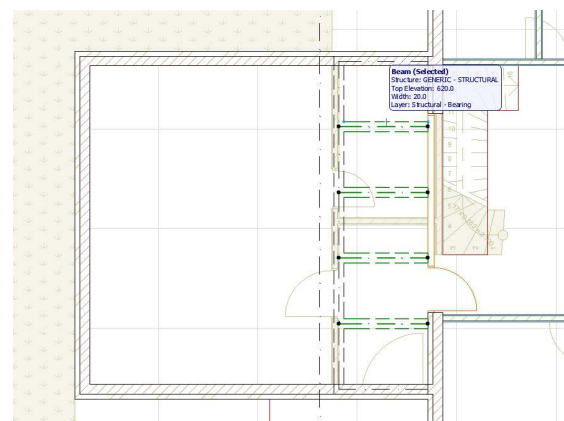
- parametri alatke Beam
- osa grede
- tipovi poprečnih presjeka
- način iscrtavanja



Komanda Multiply- multipliciranje

2

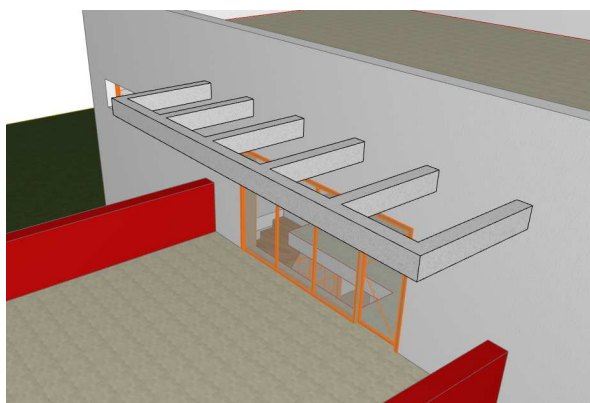
- način umnožavanja elemenata
- distribucija elemenata grede



3

Modelovanje stuba

- parametri stuba
- način insertovanja u crtež





infoARS

INFORMATIČKA AKADEMIJA

Kurs arhitektonskog modelovanja- ArchiCAD 19

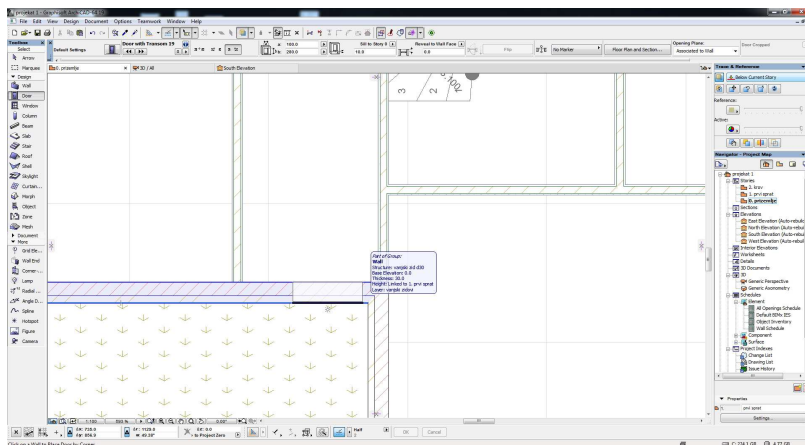
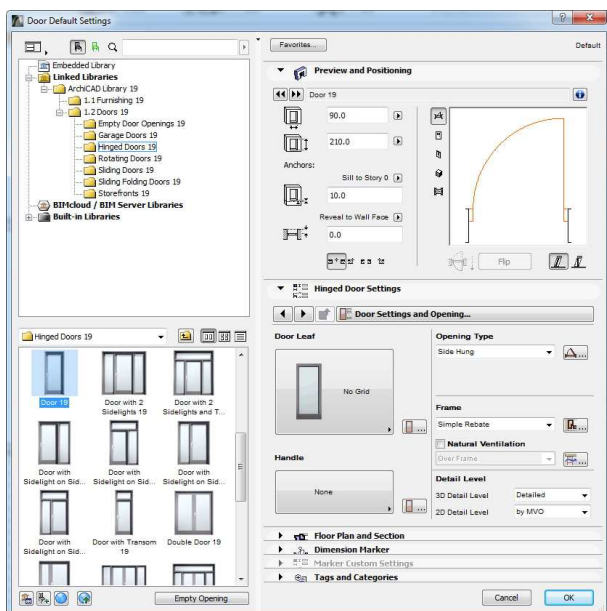
Cilj ove vježbe je da se polaznik upozna sa korištenjem integrisanih elemenata ArchiCAD biblioteke- prozorima i vratima, njihovim parametrima i načinom insertovanja u model

Vježba 7- Vrata i prozori

Vrata

1

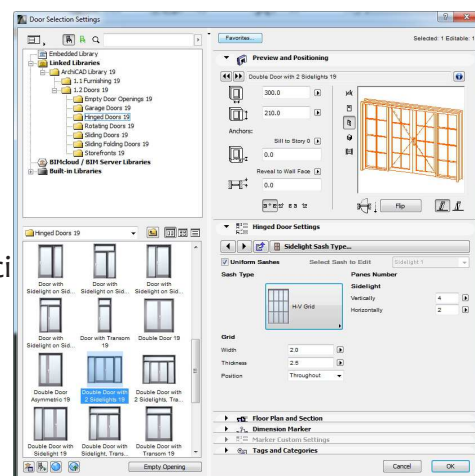
- vrste gotovih elemenata biblioteke
- parametri vrata
- insertovanje u model



2

Prozori

- vrste prozora u biblioteci
- parametri prozora
- insertovanje u model



051/46 46 26, 066/ 99 66 88

www.infoars.net

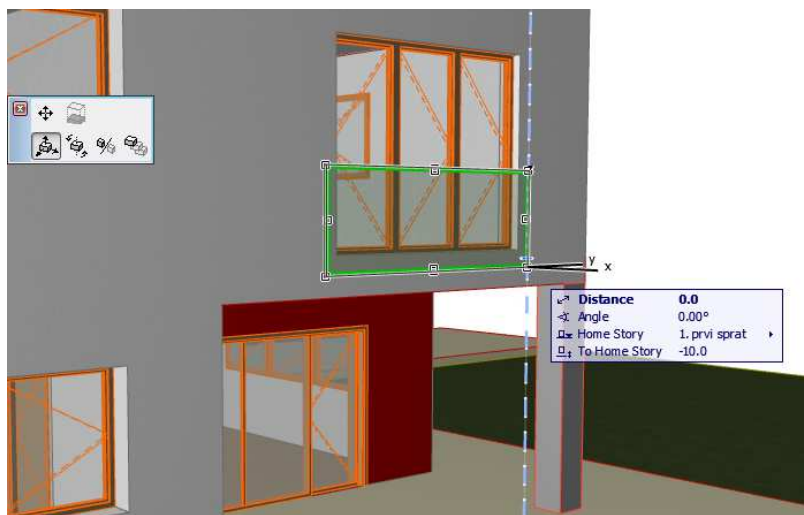
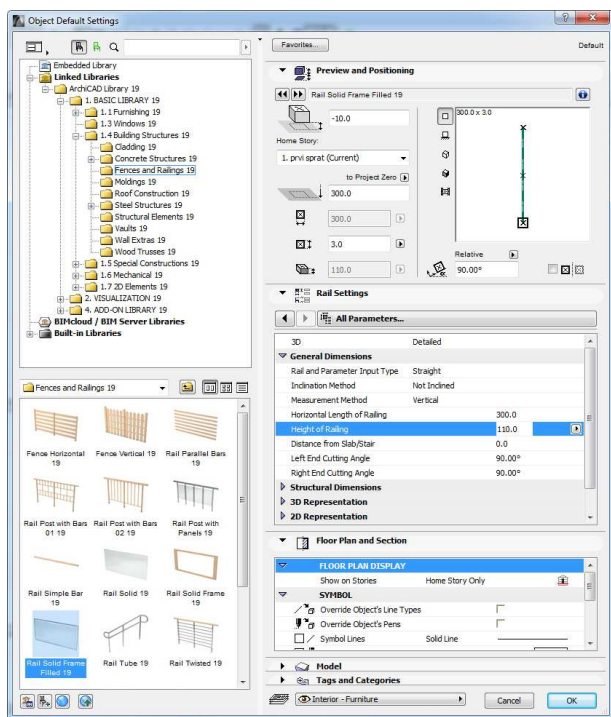
www.informatickaakademija.com

Kurs arhitektonskog modelovanja- ArchiCAD 19

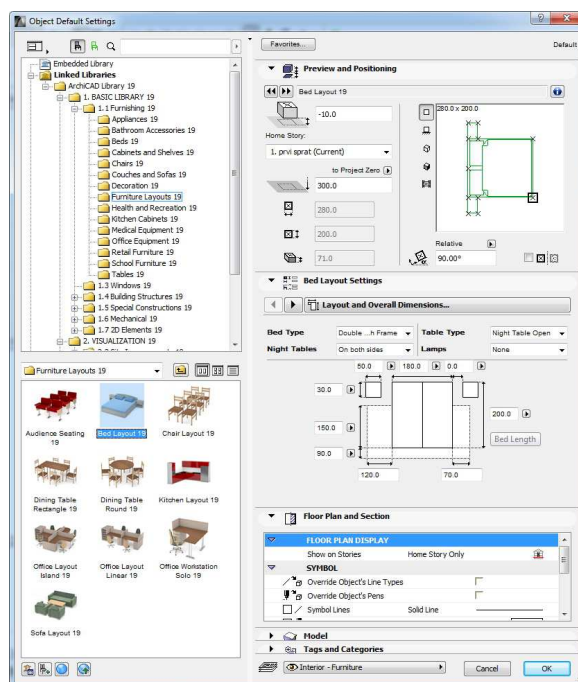
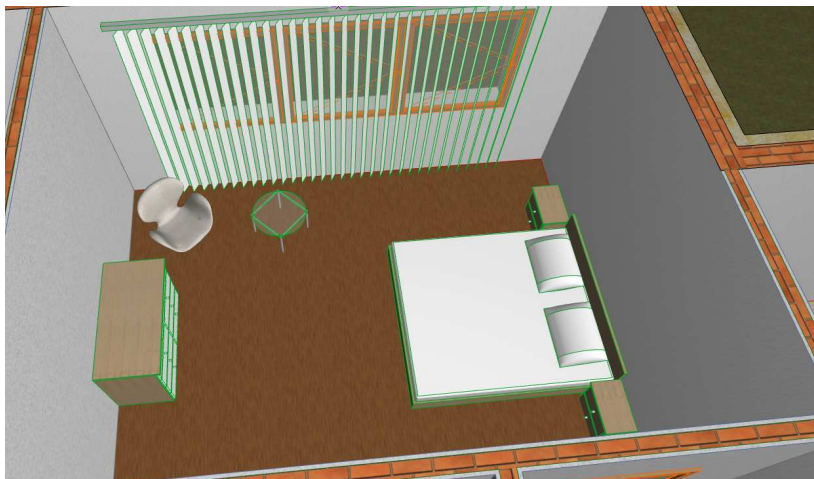
Cilj ove vježbe je da se polaznik upozna sa korištenjem integrisanih elemenata ArchiCAD biblioteke- prozorima i vratima, njihovim parametrima i načinom insertovanja u model

Vježba 8- Objekti biblioteke

- 1** Ograda- Railing
- iscrtavanje ograde- Railing
 - izmjene materijala i podešavanje parametara



- 2** Namještaj- Furniture
- pregled vrsta namještaja u biblioteci
 - podešavanje parametara elemenata
 - insertovanje u model



Kurs arhitektonskog modelovanja- ArchiCAD 19

Cilj ove vježbe je da se polaznik upozna sa korištenjem alatki Section- presjek, Elevation- izgled i Interior elevation- enterijerski izgled.

Vježba 9- Presjeci, izgledi i enterijerski izgledi

1

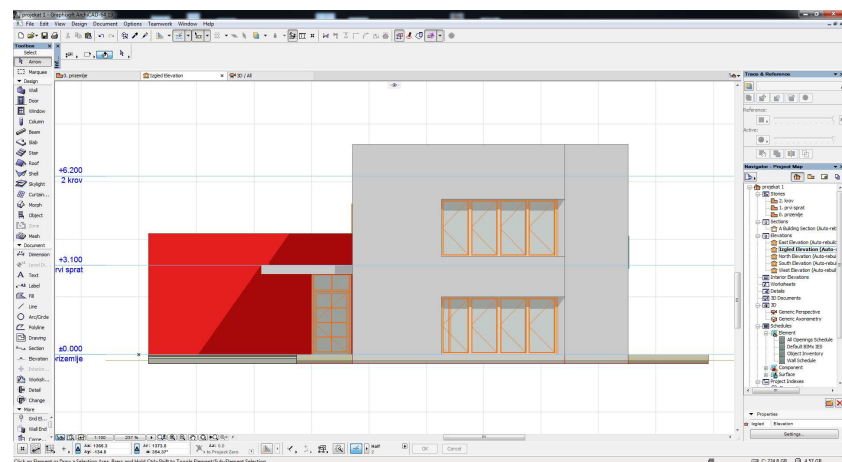
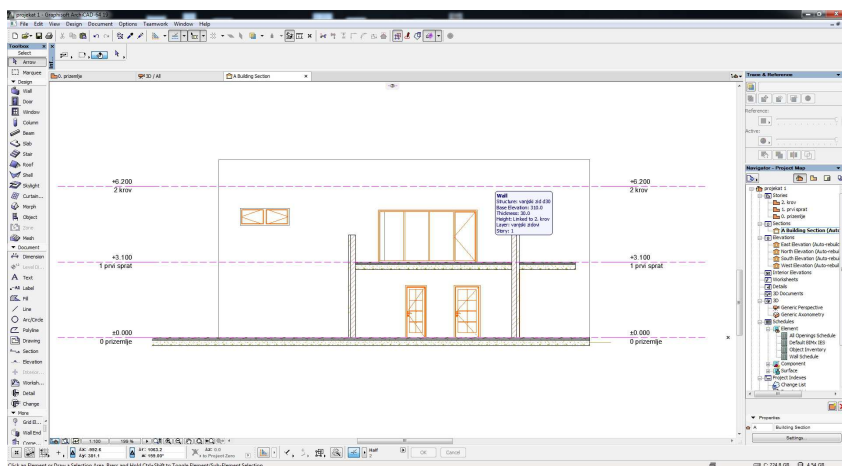
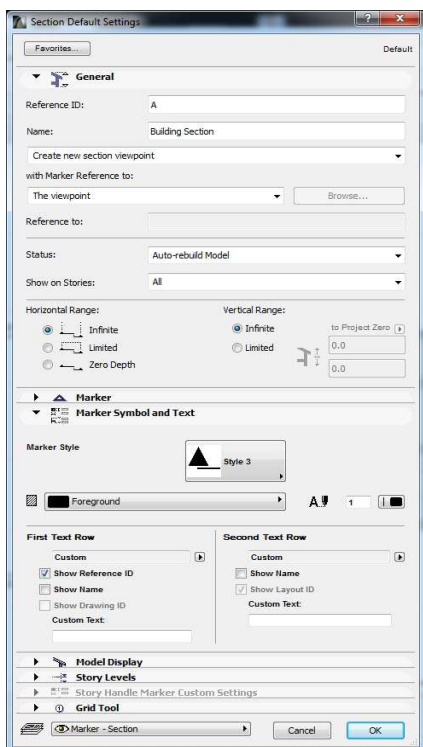
Presjek- Section

- parametri presjeka
- način crtanja

2

Izgled- Elevation

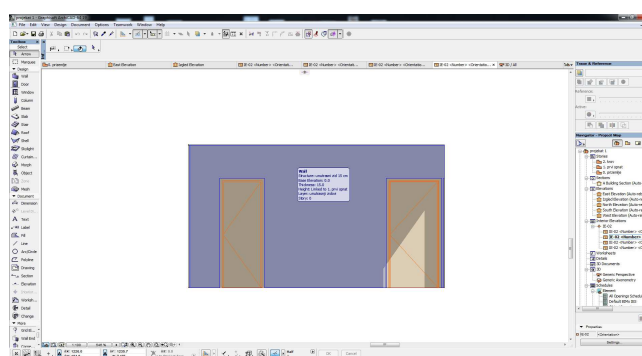
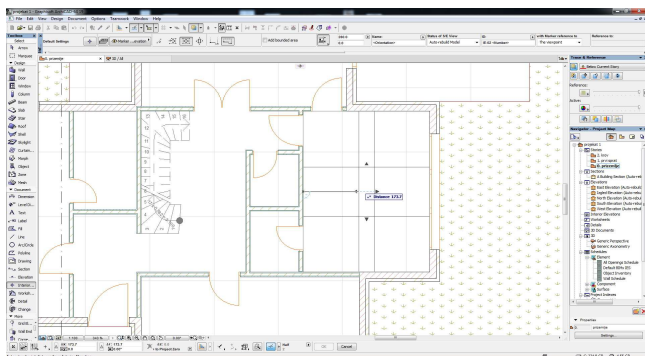
- parametri alatke Elevation



2

Enterijerski izgledi

- parametri alatke Interior elevation
- načini crtanja i podašavanja





infoARS

INFORMATIČKA AKADEMIJA

Kurs arhitektonskog modelovanja- ArchiCAD 19

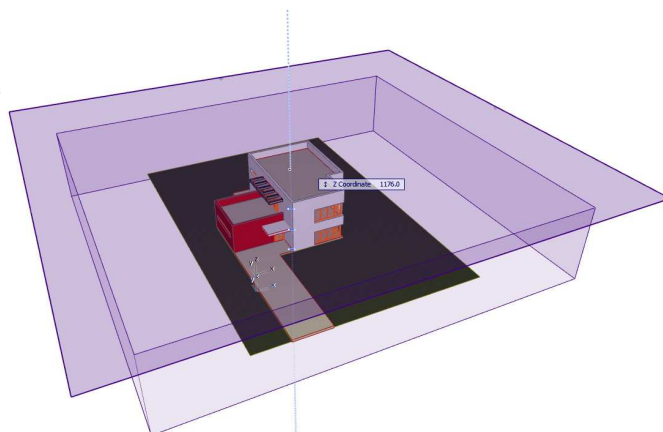
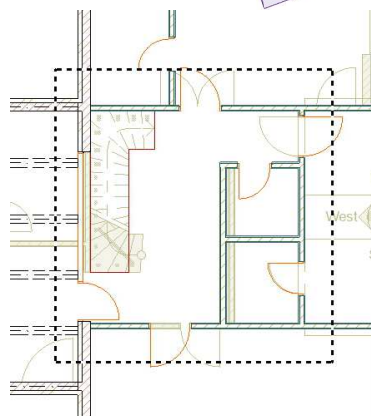
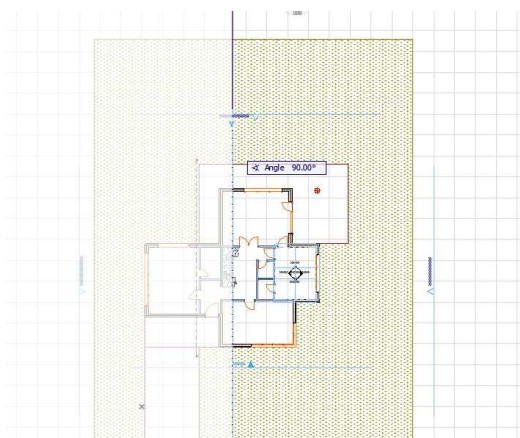
Cilj ove vježbe je da se polaznik upozna sa korištenjem alatki za pravljenje 3d isječaka modela- podešavanjem ili kreiranjem presijecajućih ravni - Cutting Planes ili korištenjem opcije Marquee.

Vježba 10- 3d isječci- 3d Cutting planes i Marquee

1

3d cutting planes- ravan presjecanja

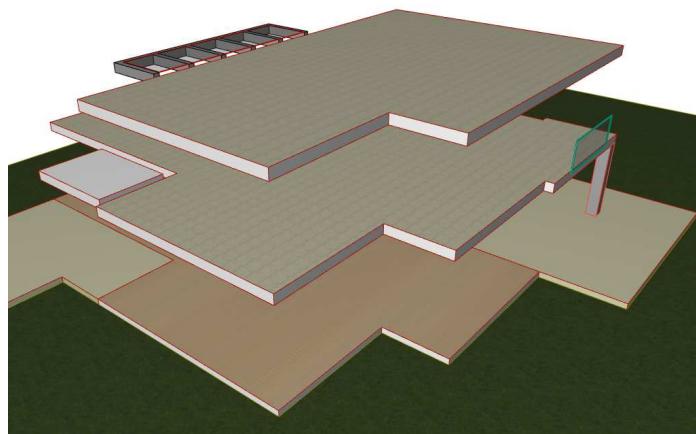
- podešavanje ravni presjecanja
- kreiranje novih ravni presjecanja



2

Marquee

- pravljenje isječaka korištenjem opcije Marquee
- prikaz isječaka u 3d prozoru
- prikaz filtriranih elemenata u 3d prozoru





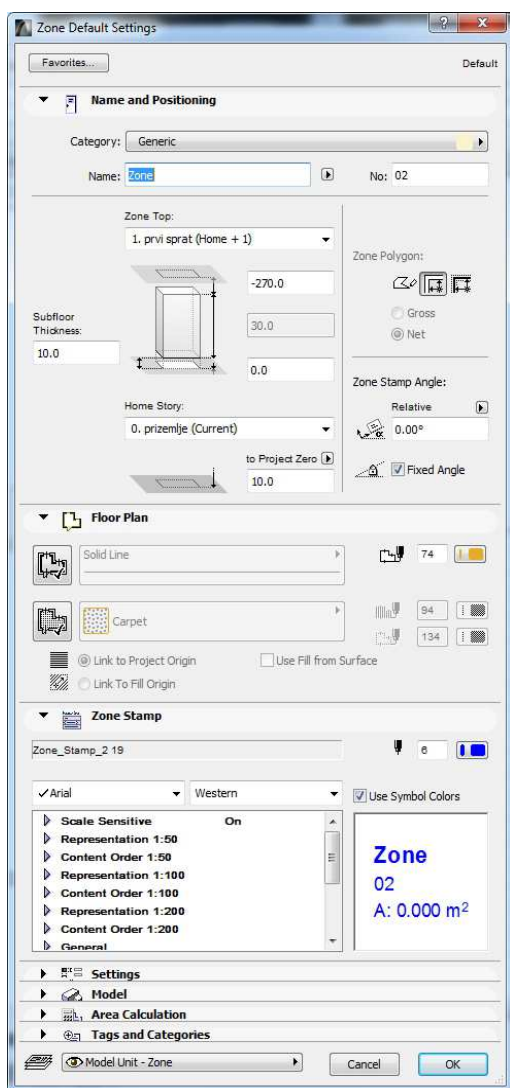
infoARS

INFORMATIČKA AKADEMIJA

Kurs arhitektonskog modelovanja- ArchiCAD 19

Cilj ove vježbe je da se polaznik upozna sa korištenjem alatki za unapređenje nacрта i modela- pravljenje zona- alatka Zone, šrafura- alatka Fill, teksta- alatka Text.

Vježba 11- Pravljenje zona, šrafura i teksta



1

Alatka Zone

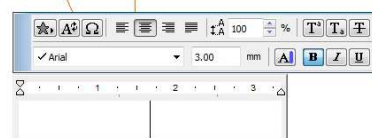
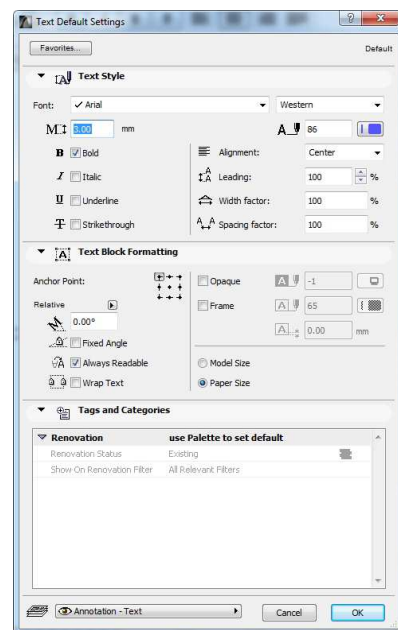
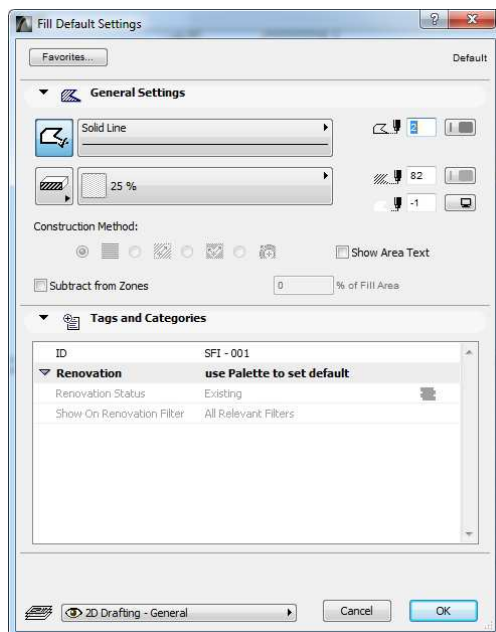
- podešavanje parametara zona
- iscrtavanje i 3d prikaz zona



2

Alatka Fill- šrafura

- podešavanje parametara šrafura
- iscrtavanje i 3d prikaz zona



3

Alatka Text

- podešavanje parametara teksta
- način insertovanja u crtež



051/46 46 26, 066/ 99 66 88

www.infoars.net

www.informatickaakademija.com



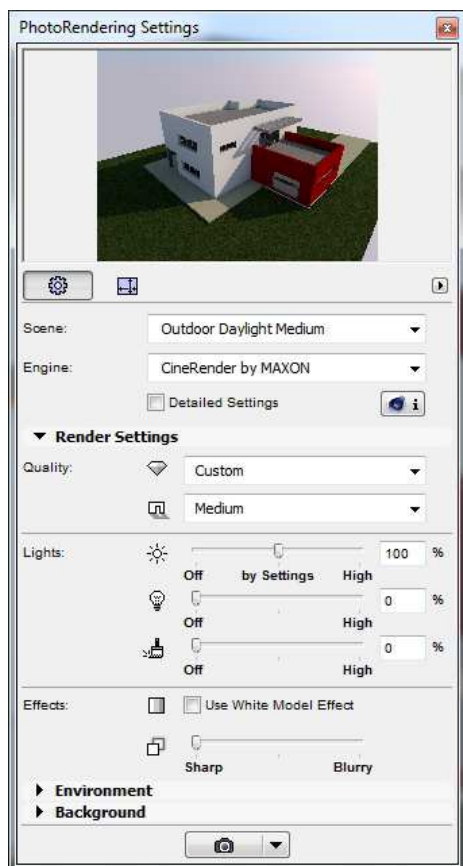
infoARS

INFORMATIČKA AKADEMIJA

Kurs arhitektonskog modelovanja- ArchiCAD 19

Cilj ove vježbe je da se polaznik upozna sa korištenjem alatki za finalnu vizuelizaciju modela- photorendering settings, te sa mogućnostima izrade novih materijala, upoznavanje sa alatkom Surface painter

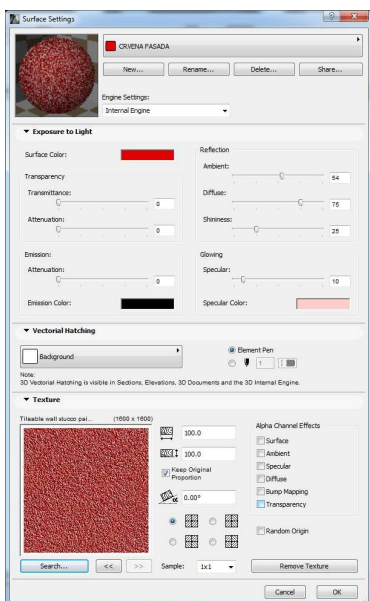
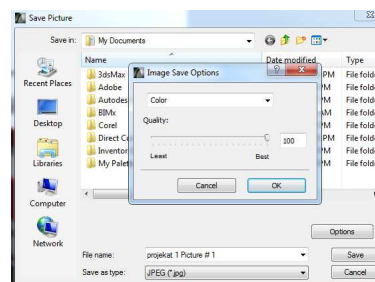
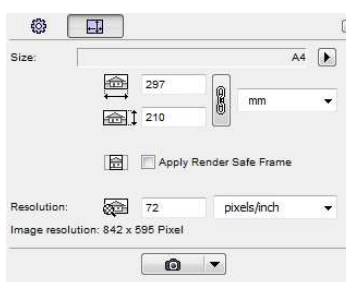
Vježba 12- Render- pravljenje finalnih perspektivnih slika



1

Podešavanje rendera- Photorendering Settings

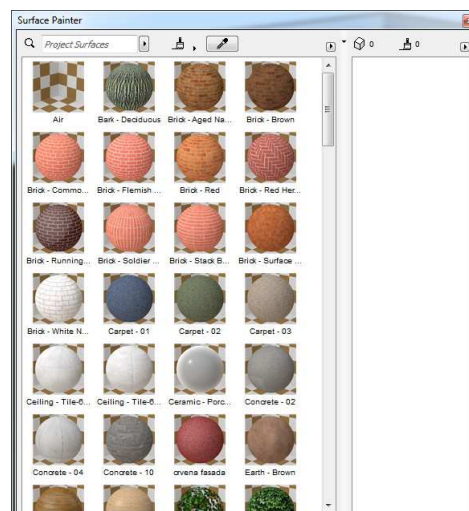
- podešavanje parametara rendera
- snimanje rendera u željenim formatima



2

Finalizacija rendera

- pravljenje novih materijala
- Surface painter





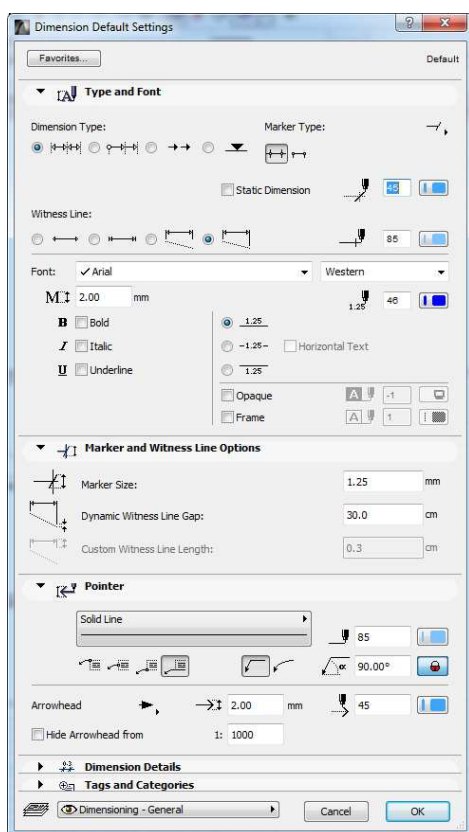
infoARS

INFORMATIČKA AKADEMIJA

Kurs arhitektonskog modelovanja- ArchiCAD 19

Cilj ove vježbe je da se polaznik upozna sa korištenjem alatki za kotiranje- Dimensioning, automatsko dimenzionisanje- Automatic Dimensioning, te pripremom crteža za štampu- pravljenjem Layouta

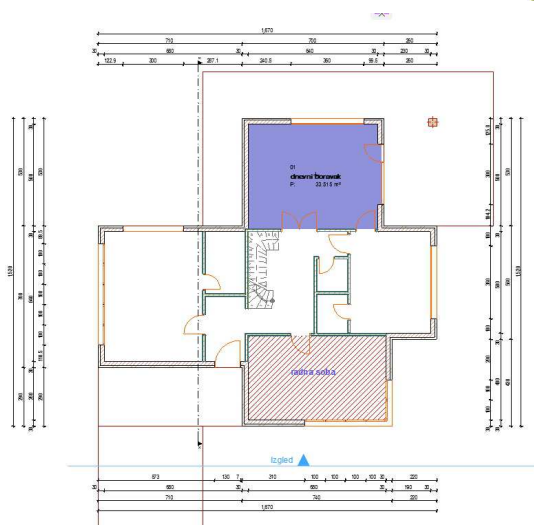
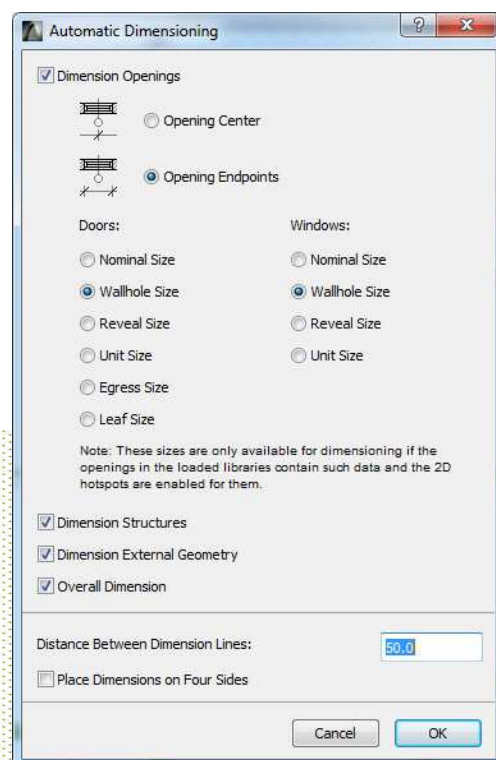
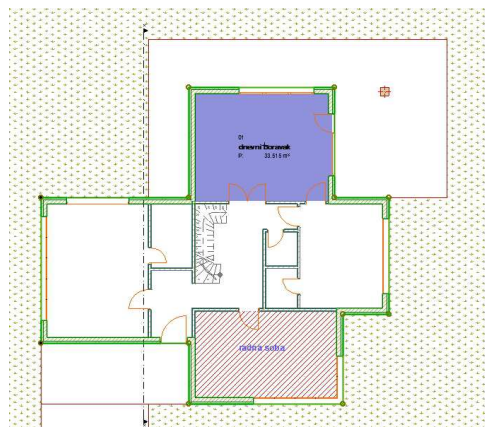
Vježba 13- Kotiranje, automatsko kotiranje, Layout



1

Kotiranje- Dimensioning

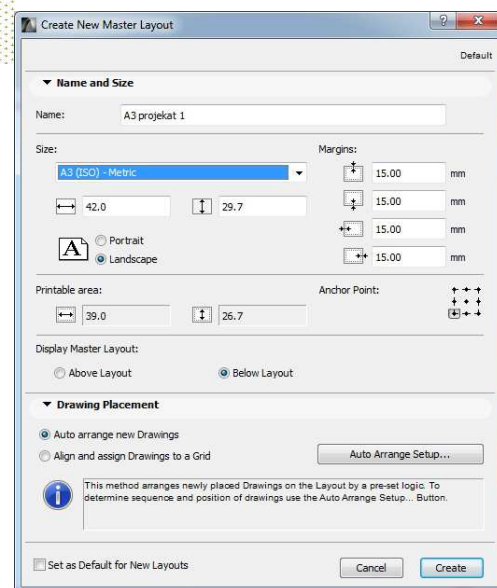
- podešavanje kotiranja- alatke Dimensioning
- Automatsko kotiranje



2

Podešavanje Layouta

- podešavanje crteža za štampu
- parametri Layouta
- pravljenje master Layouta



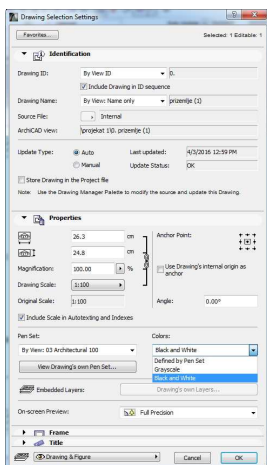
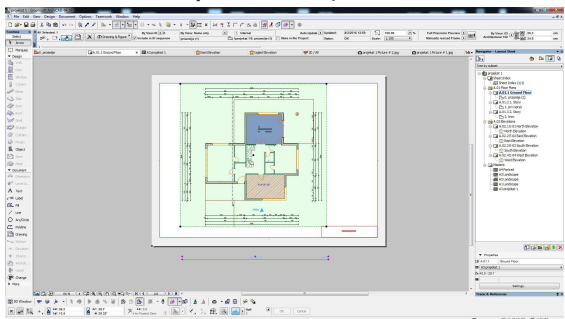
Kurs arhitektonskog modelovanja- ArchiCAD 19

Cilj ove vježbe je da se polaznik upozna sa korištenjem Layouta, Master Layouta, smještanjem crteža na Layoute, te njihovim štampanjem.

Vježba 14- Smještanje crteža na Layout i štampanje crteža

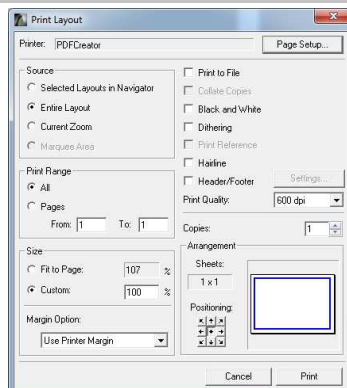
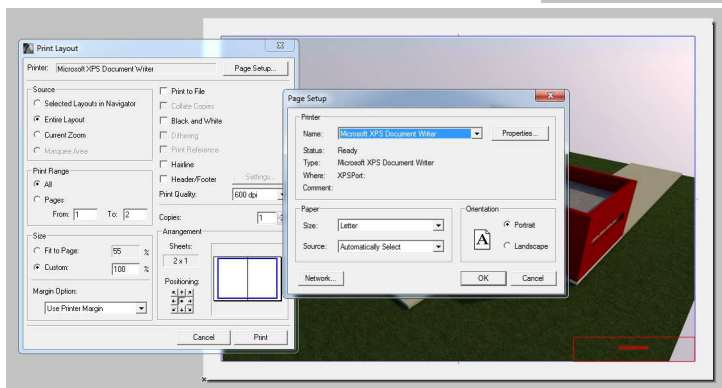
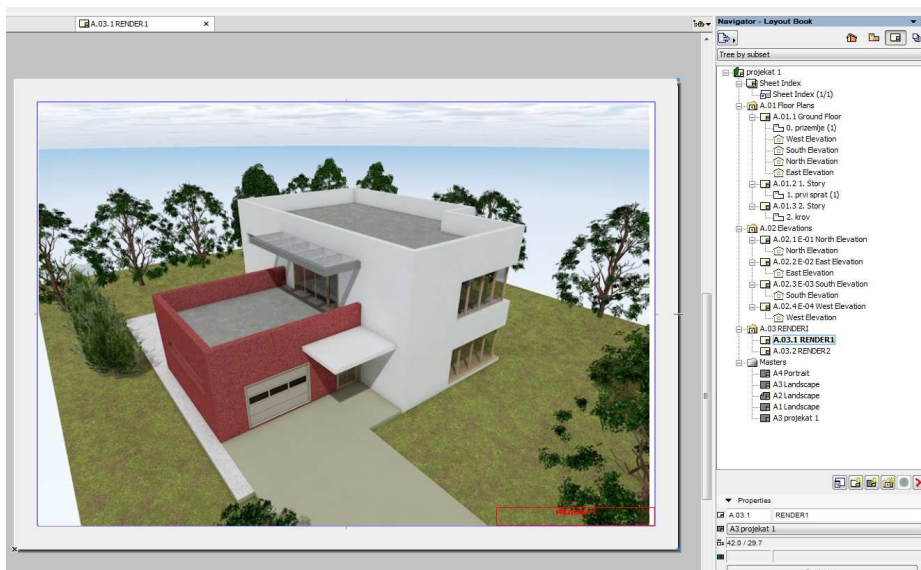
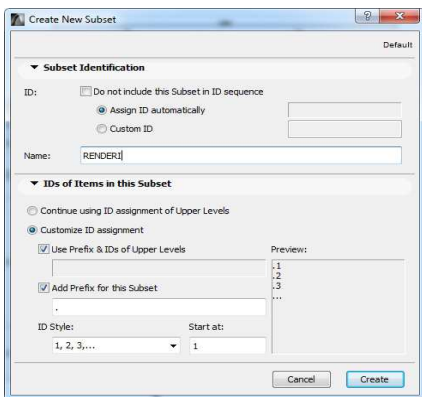
1 Crteži- Drawings

- način smještanja crteža na Layout
- način prikazivanja crteža



2 Subsets- Podgrupe

- pravljenje podgrupa u Layout knjizi



3

Štampanje

- odabir štampača
- podešavanje štampanja crteža